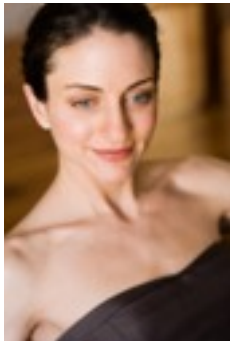


SENTA DOROTHEA KIRSCHNER

DETAILS

PLAYING AGE	31 -39
HEIGHT	164 cm
HAIR	Brown
EYES	Blue
FIGURE	Slim
ETHNICITY	Caucasian
LANGUAGES	English, French, Italian (Basic), Spanish (Basic)
DIALECTS	Bavarian
RESIDENCE	Berlin and Munich
ACCOMMODATION	Hamburg, Cologne, Frankfurt, Zurich, Bâle, London, Paris, New York, Boston, Chicago, Los Angeles, et al.
SPORT	Pilates, Yoga, Horseback-Riding, Skating, Skiing
DANCE	Ballet, Jazz, Modern
INSTRUMENTS	Piano (good)
SINGING	Soprano
DRIVERS LICENSE	Car
TRAINING	1998-2000 Michael Chekhov Studio, New York
ADDITIONAL TRAINING	2005 the studio, Los Angeles



CONTACT	ADDRESS	TELEPHONE	ELECTRONIC
PERSONAL	SENTA DOROTHEA KIRSCHNER	+49 . (0)175 . 29 59 634	sdk@senta-dorothea-kirschner.com www.senta-dorothea-kirschner.com
UK AGENCY	ERT Agency 8 Progress Business Center Whittle Parkway Slough Berkshire SL1 6DQ United Kingdom	+44 . 1628 . 60 16 72	agency@englishrep.com www.englishrep.com

**FEATURE
FILM
(selection)**

YEAR	TITLE	DIRECTOR	PRODUCTION	ROLE
2010	DON 2	Farhan Akhtar	Excel Entertainment	Geisel (Supporting)
2009	DREI	Tom Tykwer	X Filme Creative Pool	Katrin (Supporting)
2009	WIR SIND DIE NACHT	Dennis Gansel	Rat Pack	Police Officer (Supporting)
2008	DEUTSCHLAND 09	Wolfgang Becker	Herbstfilm Produktion	Patient (Supporting)
2005	MINUS ZWEI	Sabeth Hron	2nd Entertainment	Kiana (Lead)
1998	WHO'S YOUR ANGEL?	Jason Mullis	Sigh It's Fiction	Dorothy (Lead)

**TV
(selection)**

YEAR	TITLE	DIRECTOR	PRODUKTION / NETWORK	ROLE
2010	DER KALTE HIMMEL	Johannes Fabrick	teamWorx / ARD	Julia (Supporting)
2009	DAS HAUS ANUBIS	Jorkos Damen	DED's it Productions / Nikelodeon	Nurse (Supporting)
2007	SOKO WISMAR "DAS DRITTE FEUER"	Marcus Ulbricht	Conecentrum / ZDF	Employee (Supporting)
2006	SOKO 5113 "TÖDLICHE SPEKULATION"	Marcus Ulbricht	UFA Fernsehproduktion / ZDF	Sabina Weiche (Supporting)

**SHORT
FILM
(selection)**

YEAR	TITLE	DIRECTOR	PRODUCTION	ROLE
2012	WARMER REGEN	Romola Davies	Romola Davies Produktion	Silvia Becker (Supporting)
2011	I'M NOT JEAN PAUL BELMONDO	Socksay Chansy	Lemon Face Films	Mary (Supporting)
2011	SCHULD	Emil Spiewok	Universität Bayreuth	Woman (Lead)
2011	AMBIVALENT	Sebastian Schneider	FH Ansbach	Woman (Lead)
2008	THE SECRET ADVENTURES OF THE PROJECTIONIST	Max Sacker	A-Film Productions	Femme Fatale (Lead)
2007	ACHTZIG PROZENT	Johannes Schieshl	Filmakademie Ludwigsburg	Christine (Lead)
2006	VERLASSEN	Roman Schauerte	Filmakademie Ludwigsburg	Susanne (Lead)
2004	DER GERISSENE FADEN	Daniel Schmidt, Carsten Janssen	FH Dortmund	Carla (Lead)
2004	EINE HAMMERGESCHICHTE	Maia Sander	HFF München	Nina (Lead)
2003	THE FOUR SUSPECTS	Kristian Costa-Zahn	Merz Akademie	Viviana Kitova (Lead)

THEATER (selection)

YEAR	TITLE	DIRECTOR	THEATER	ROLE
2004-2005	SÜßER DIE GLOCKEN	Herbert Böttcher	Theater an der Kö Düsseldorf	Christine
2003	KING LEAR	Georg Immelmann	Gandersheimer Domfestspiele	Cordelia
2003	A MIDSUMMER NIGHT'S DREAM	Alfred Sieling	Gandersheimer Domfestspiele	Cobweb
2002	THE BEAUTY AND THE BIEST	Georg Immelmann	Gandersheimer Domfestspiele	Belle
2001	DIE SCHNEEKÖNIGIN	Gabriele Wiemüller	Mainfranken Theater Würzburg	Sonja, Princess
2000	DIE PERLE ANNA	Herbert Heinz	Fränkisches Theater Maßbach	Christine
2000	CASH ON DELIVERY	Jochen Thau	Fränkisches Theater Maßbach	Sally
2000	OSCAR	Herbert Heinz	Fränkisches Theater Maßbach	Christine
2000	ONE FLEW OVER THE CUCKOO'S NEST	Werner Müller	Fränkisches Theater Maßbach	Sandy

AWARDS

THE SECRET	2008	filmaka.com " Runner Up "
ADVENTURES OF THE	2008	RIFF-Rhode Island International Film Festival " Vortex Fantasy Award " and " Best of Fest "
PROJECTIONIST	2008	5th International Nomos Smallformat Awards " First Place 16mm Film "
	2008	FBW-Filmbewertungsstelle Wiesbaden " Prädikat besonders wertvoll "